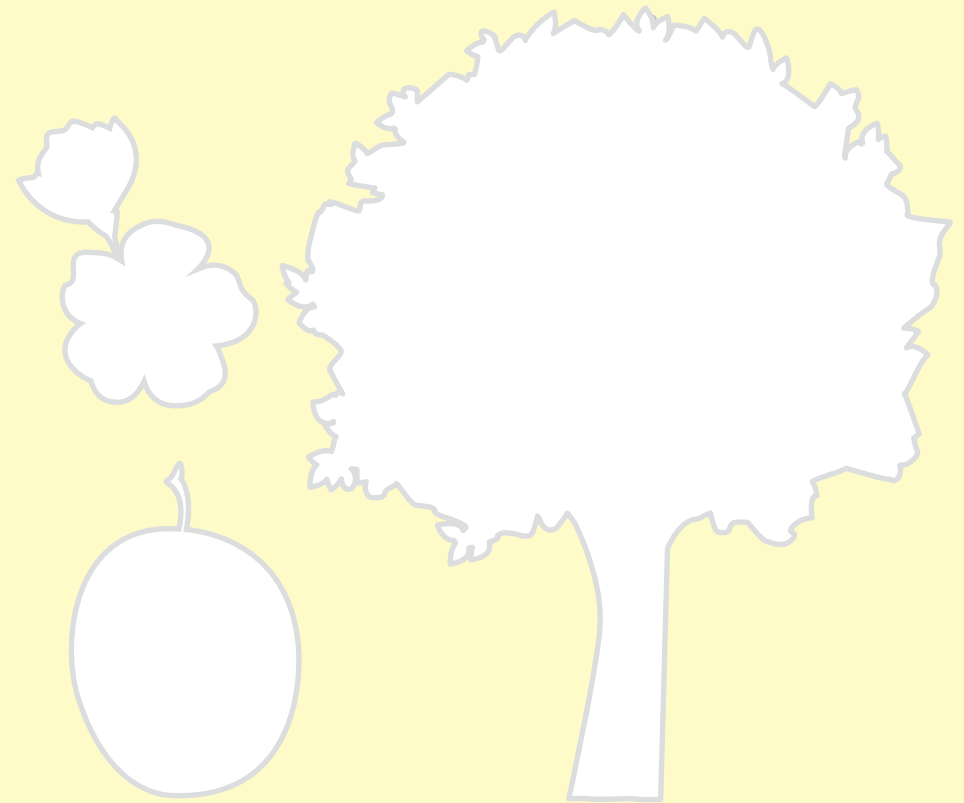
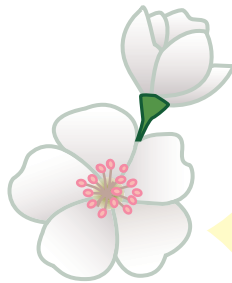
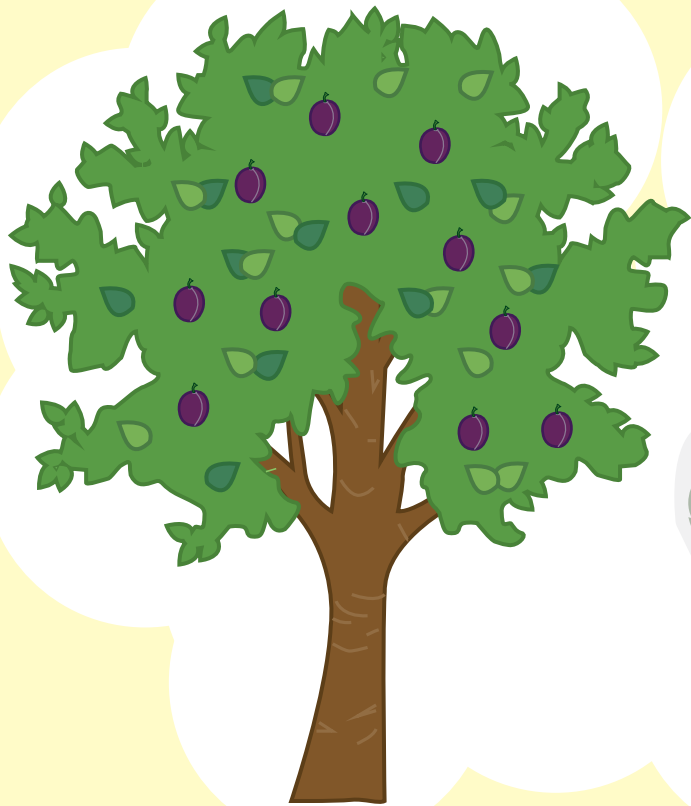


# PLUM TREE

PAINT IT...



IT IS A COLD RESISTANT TREE, BUT IT NEEDS THE SUN. ITS LEAVES HAVE AN ELONGATED SHAPE. ITS FRUITS MATURE IN SUMMER, AND THEY ARE PURPLE AND OVAL SHAPED.

PLUM TREES

P